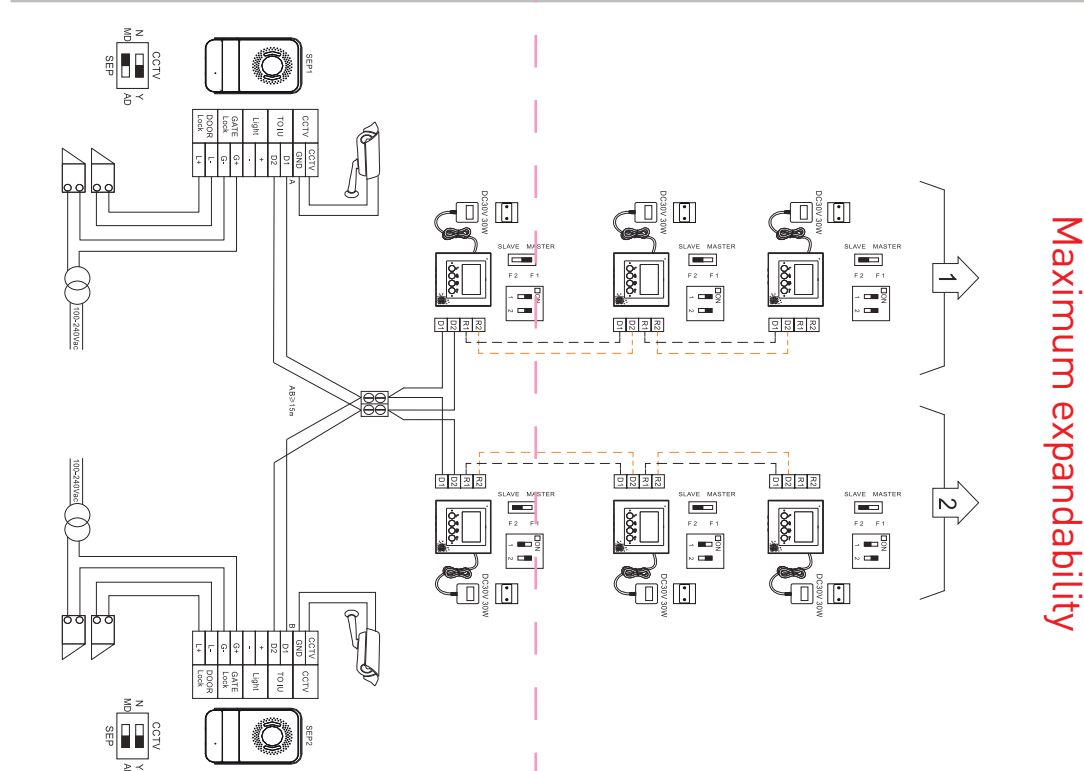


Two-family house
with 1 entrance

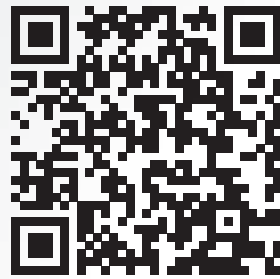


Maximum expandability

Pick your kit... ...and expand it



Description						
HIGH RESISTANCE STREET PANEL						
Weatherproof	IP54	IP54	IP54	IP54	IP54	IP66
Mounting kit and screws	✓	✓	✓	✓	✓	✓
INTERNAL UNIT						
10" colour display	✓					
7" colour display		✓	✓			
4,3" colour display				✓		
Touch screen	✓	✓				
Hands free	✓	✓	✓	✓		
Double opening (door and gate)	✓	✓	✓	✓		
Adjustable volume	✓	✓	✓	✓		
Light switch	✓	✓	✓			
Clock screen saver	✓	✓				
MP3 melody & digital photo frame (SD card slot, not included)	✓	✓				
Visitor face capture & answering machine	✓	✓				
Installation up to 3 internal units	✓	✓	✓	✓	✓	
Audio Intercom function	✓	✓	✓	✓	✓	
KIT REFERENCE NUMBER/FINISH	369330/Silver	369320/Silver	369220/Mirror	369110/White	369339/Silver	369400/White
EXPANSION NUMBER/FINISH Expand your system by adding up to 2 internal units.	369335/Silver	369325/Silver	369225/Specchio	369115/White		



TEKRA
Официален вносител за България

София: 070011010
Пловдив: (032) 961 157
Варна: (052) 737 350
Бургас: (056) 833 231
Плевен: (064) 803 908

WWW.TEKRA.BG



A complete **system**
for your **security**



Pro and Consumer Service
BP 30076 / F - 87002 Limoges Cedex
www.legrand.com

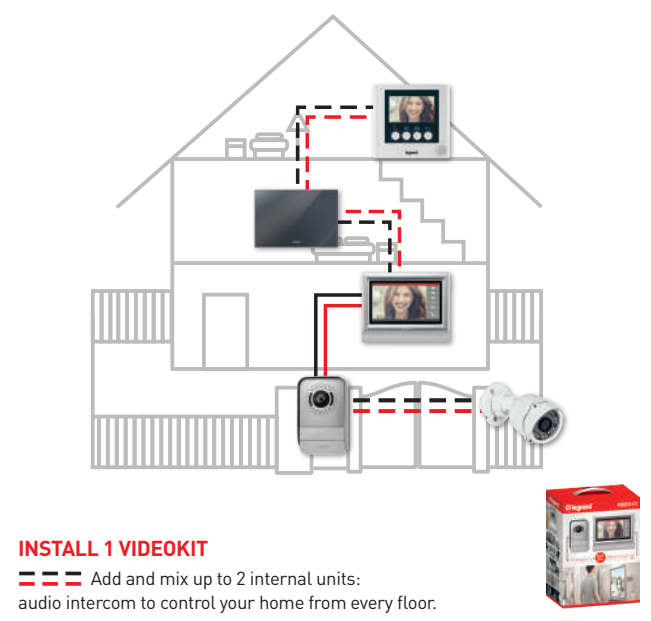


Video door entry and video surveillance for all-round security



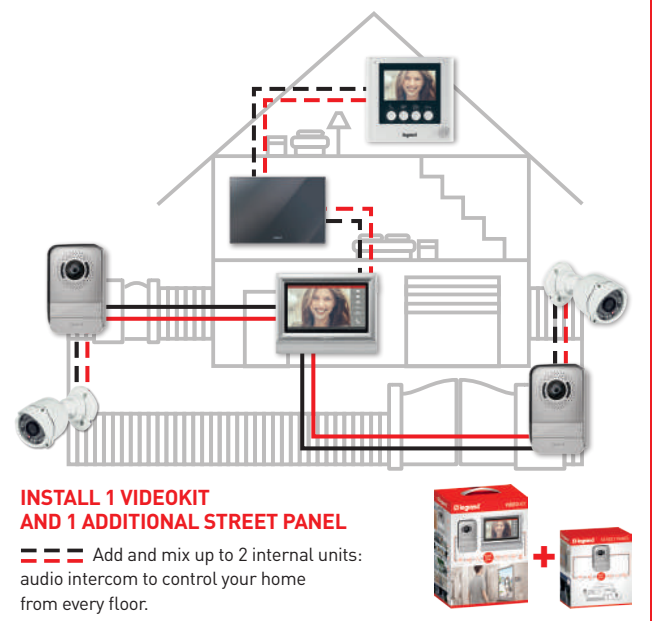
- Easy 2-wires installation
- Weatherproof (IP54)
- Metal rainshield
- 95° wide angle camera
- Customizable backlit name tag for 1 or 2-family houses
- Security camera connection

Managing one entrance?



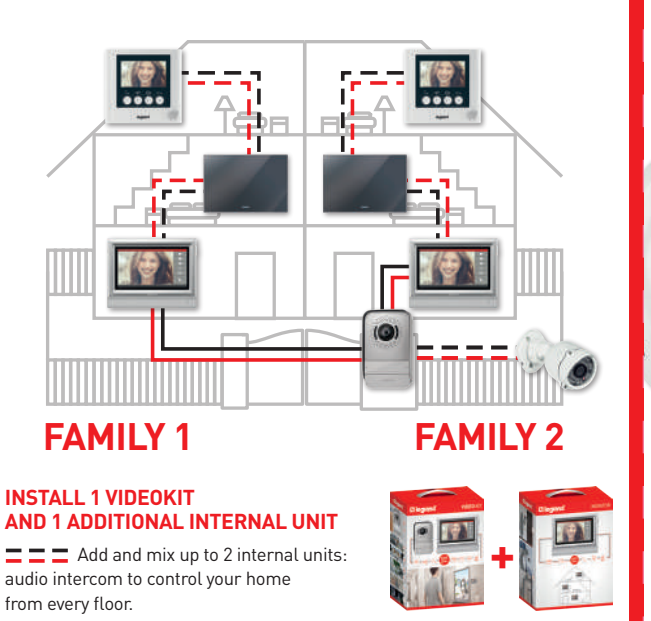
INSTALL 1 VIDEOKIT
--- Add and mix up to 2 internal units; audio intercom to control your home from every floor.

Need to control two entrances?



INSTALL 1 VIDEOKIT AND 1 ADDITIONAL STREET PANEL
--- Add and mix up to 2 internal units; audio intercom to control your home from every floor.

Living in a two-family house?



INSTALL 1 VIDEOKIT AND 1 ADDITIONAL INTERNAL UNIT
--- Add and mix up to 2 internal units; audio intercom to control your home from every floor.

More protection

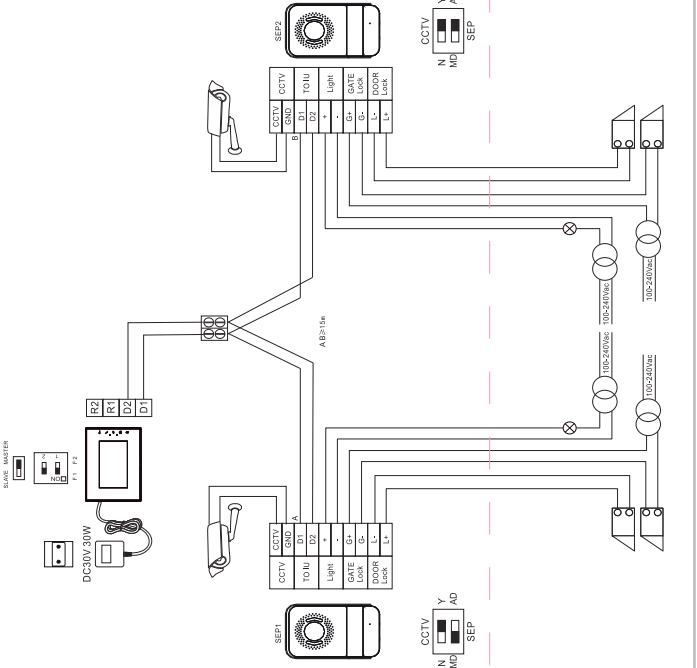
Connect the security camera with the street panel.

Press the internal unit button to switch from the street panel view to the camera view.

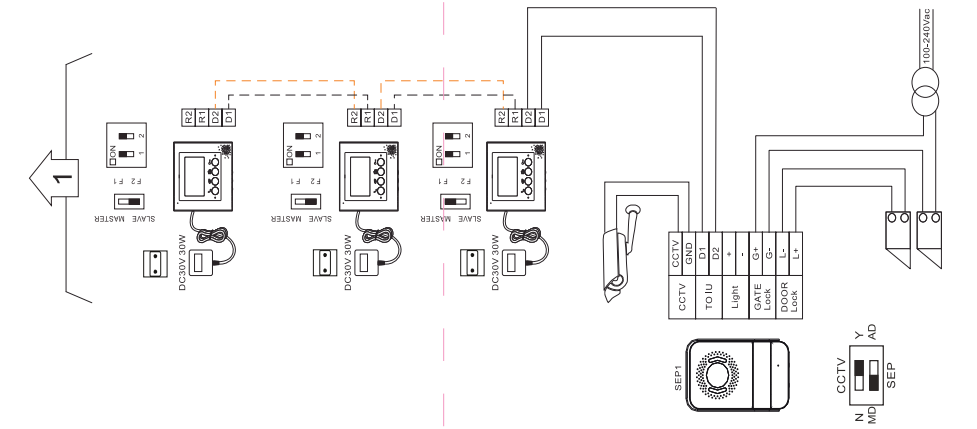
Security camera

- White finish
- Waterproof (IP66)
- Night vision
- Suitable for indoor and outdoor use
- Transformer, power supply cable and audio cable included

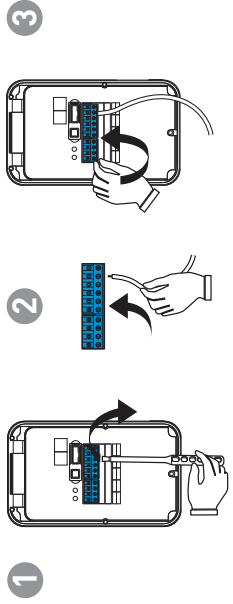
House with 2 entrances



House with 1 entrance



Removable connection clamps on both the street panel and the internal units



Control your home from every floor

Pick & mix the internal units



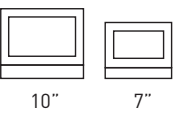
- Common features of all internal units**
- Easy 2-wires installation
 - Expandability (you can add up to 2 internal units; all **video units** are interchangeable and compatible with each other)
 - Double opening (door and gate)

Colour display 10" or 7" Touch screen



Hands-free internal unit

- Silver finish
- Touch screen
- Clock screen saver
- MP3 melody & digital photo frame (SD card slot, not included)
- Visitor face capture & answering machine
- Light switch



Colour display 7" Mirror



- Hands-free internal unit**
- Mirror finish
 - Light switch



Colour display 4,3"

- Hands-free internal unit**
- White finish

